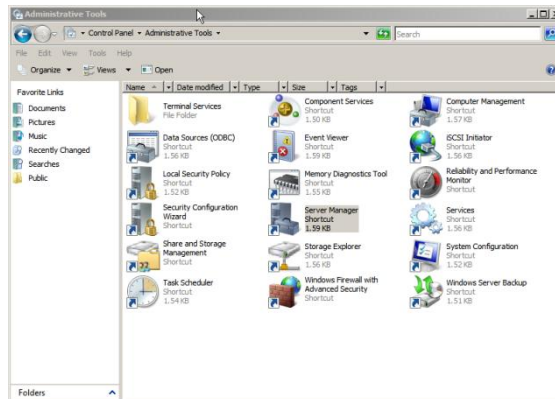


# Installation of IR under Windows Server 2008

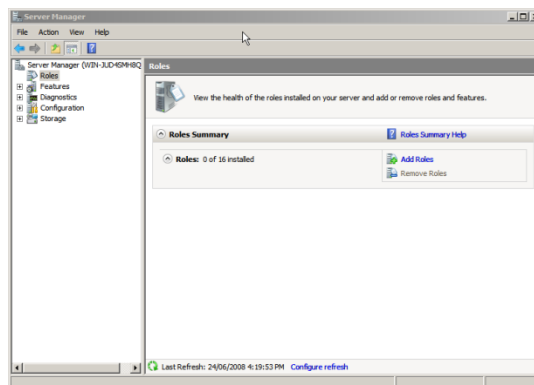
Installation of IR under windows 2008 involves the following steps:

- Installation of IIS
- Check firewall settings to allow HTTP traffic through firewall
- Installation of IR runtime
- Configuration of ODBC connections
- Configuration of IIS

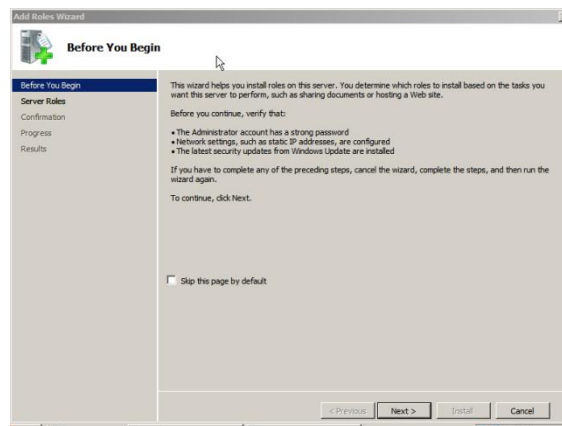
1. Installation of IIS under Windows 2008 is under the Server Manager:



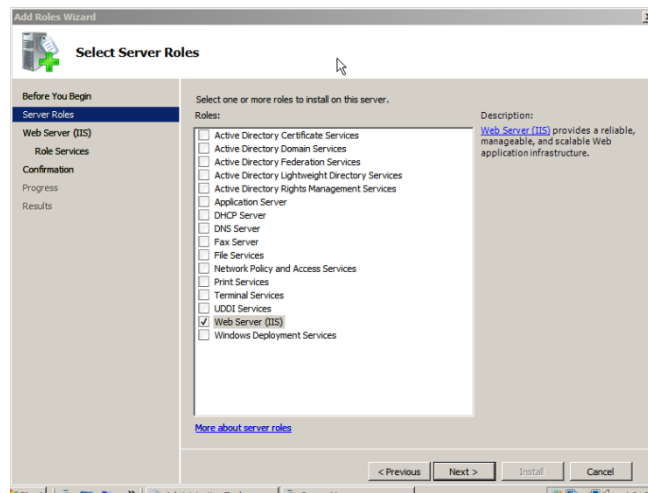
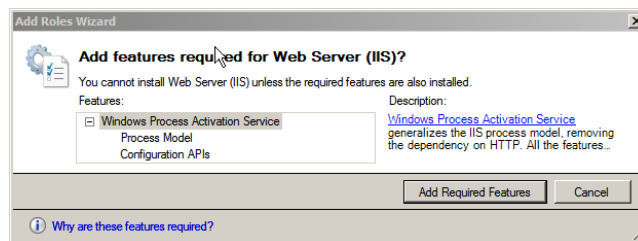
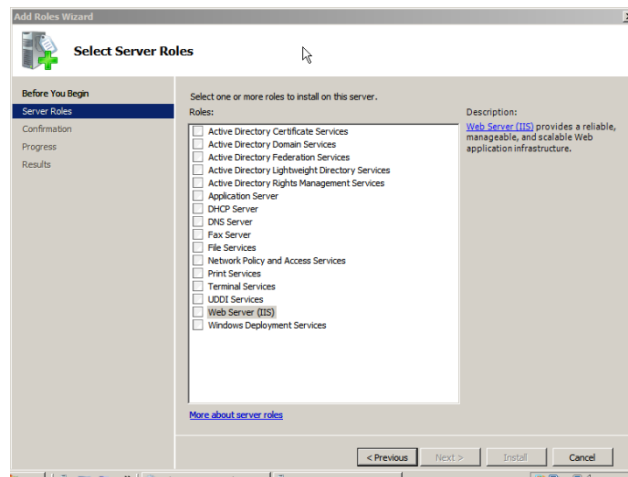
IIS is classed as a 'Role'. To install IIS, first click on 'Add Roles':



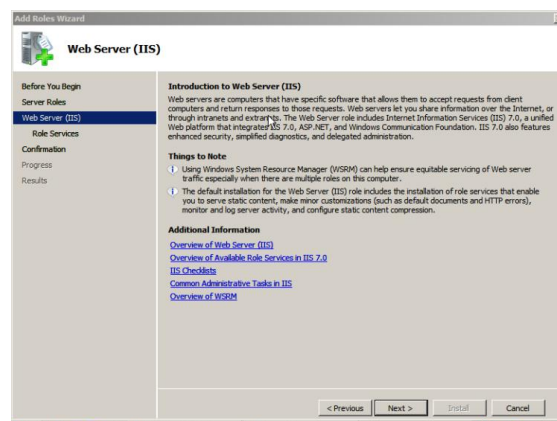
Click on 'Next' if you see the following screen:



Select 'Web Server (IIS)' under the server roles displayed. When you click on the check box, a secondary window displaying the required dependencies will be displayed. Click on 'Add Required Features' to close the dialog, then 'Next' to continue:

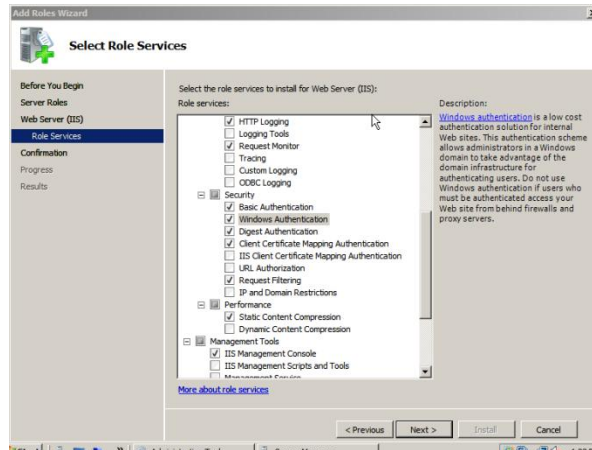


An introduction message explaining IIS will then be displayed. Click on 'Next' to continue, after reading the displayed text:

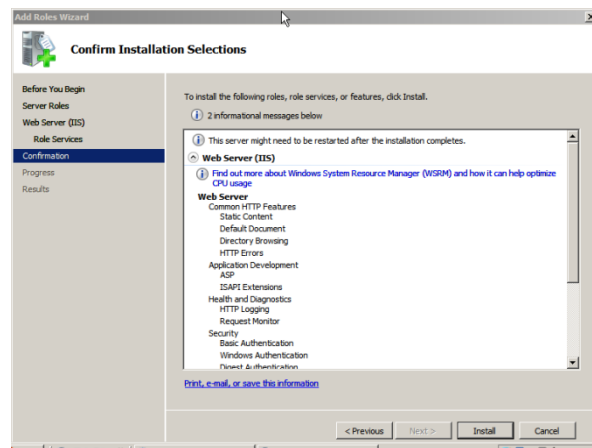


We now need to add the following features of IIS (as a minimum):

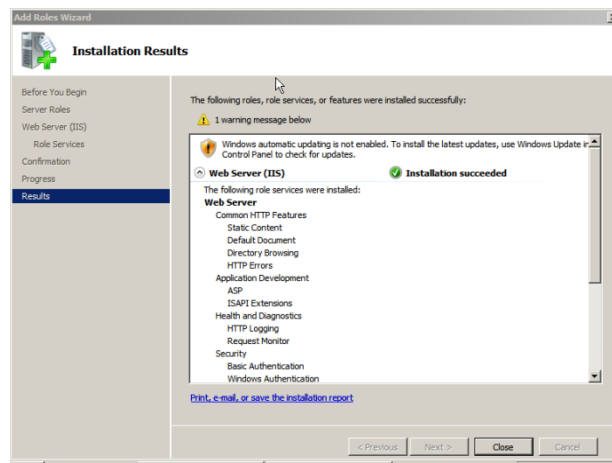
- Application Development\ASP
- Application Development\ISAPI Extensions (will be automatically added a dependency for ASP)
- Security\Basic Authentication
- Security\Client Certificate Mapping Authentication
- Security\Digest Authentication
- Security\Windows Authentication



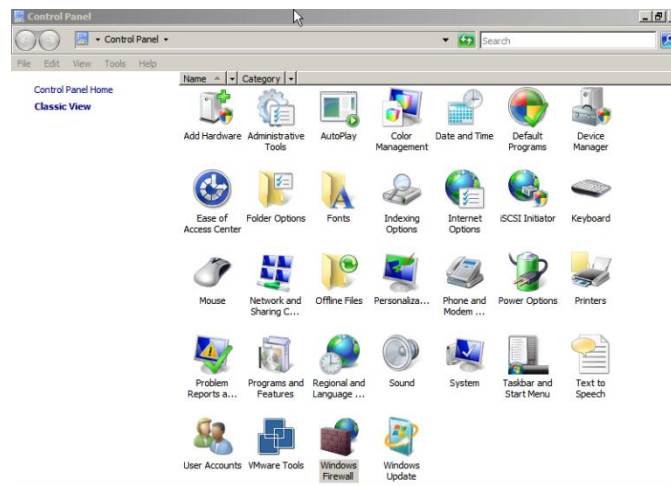
After adding this features (as a minimum), click on 'Next' to continue. After clicking on 'Next', an installation confirmation window will be displayed. Click on 'Next' to install IIS.



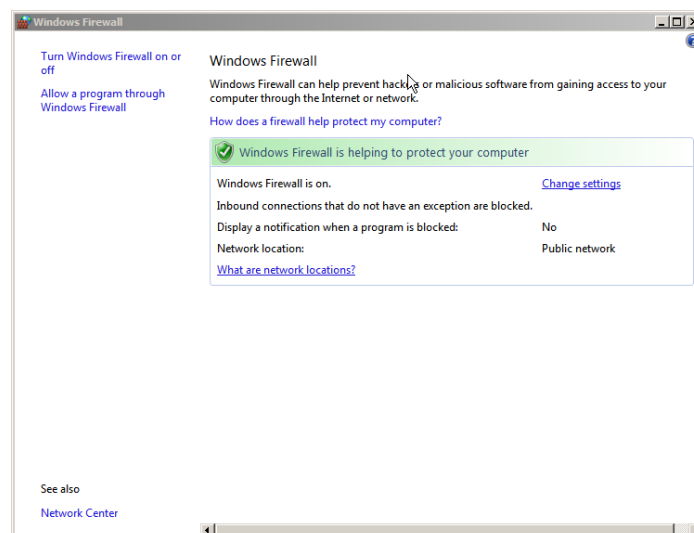
After IIS has been installed, the final dialog will be displayed indicated that IIS has been installed. If any warnings are displayed, ensure that these are checked before continuing installation of Interactive Reporting.



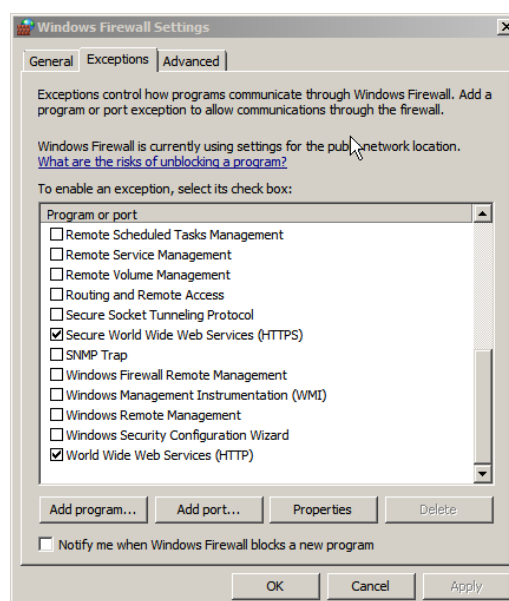
2. We now need to check that the Windows Firewall (enabled by default in Windows 2008 server) has an exception to allow port 80 (HTTP) traffic through the firewall. This is checked via the 'Windows Firewall' icon in the Control Panel settings:



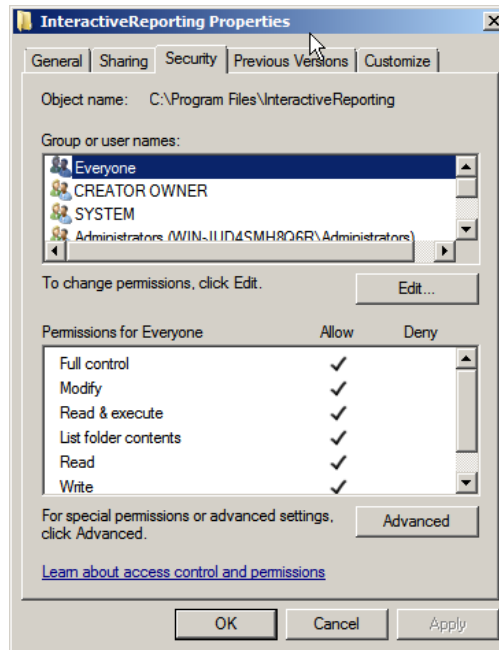
Click on 'Change settings':



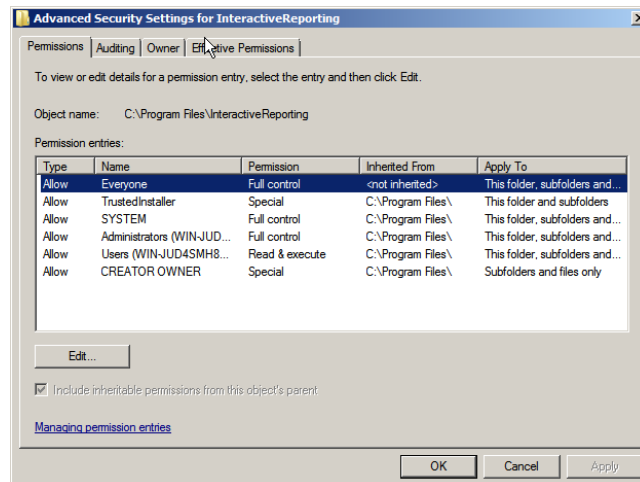
Click on 'Exceptions' and scroll to bottom of list to ensure that 'World Wide Web Services (HTTP)' is an exception for the firewall:



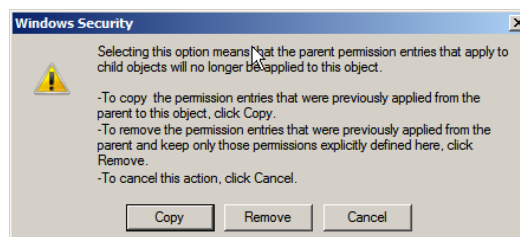
3. Extract the InteractiveReporting.zip file into the location where you wish to install IR (usually C:\Program Files). Depending on your installation zip file you may need to create the InteractiveReporting directory before unzipping installation file.
4. Installation of the IR runtime requires you to assign full control of the directory to 'Everyone':



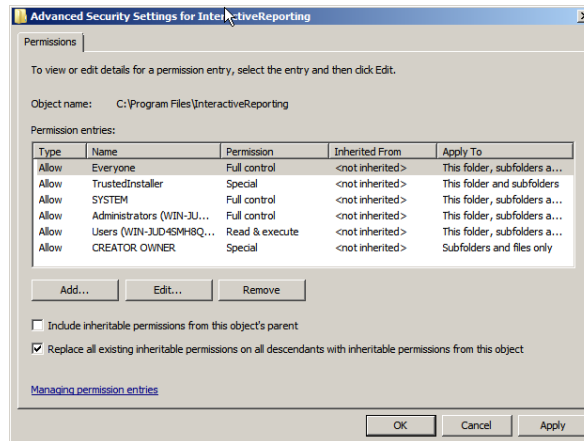
After assigning permissions to everyone, click on the advance option in the dialog, and in the permissions window, click on 'Edit':



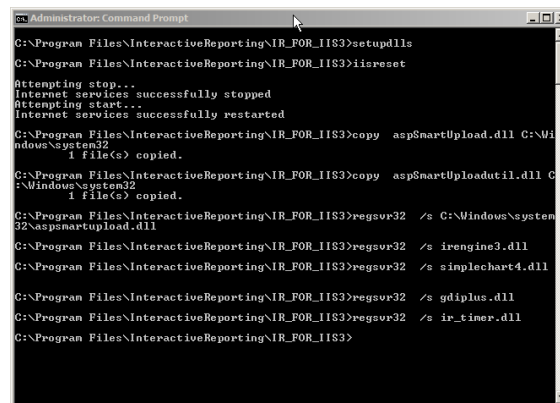
Uncheck 'Include inheritable permissions from this object's parent', and click on 'Copy' when the dialog is displayed:



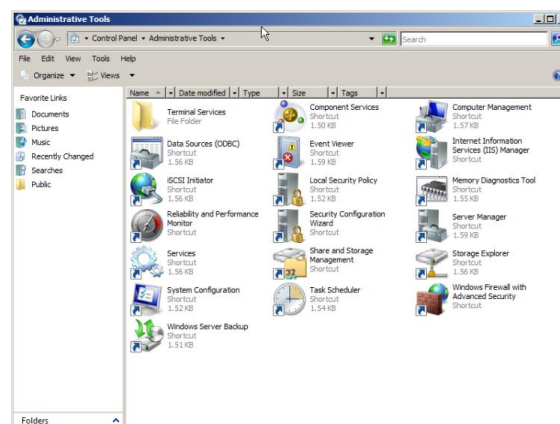
Click on 'Replace all existing inheritable permissions on all descendants with inheritable permissions from this object':



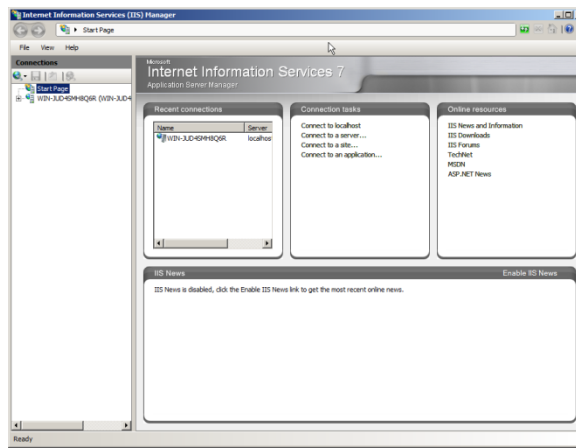
5. We now need to install & register the DLL files which IR requires to function. With the command prompt, go to the IR\_FOR\_IIS directory within the InteractiveReporting directory. Once you are in the directory, execute the setupdlls.bat file.



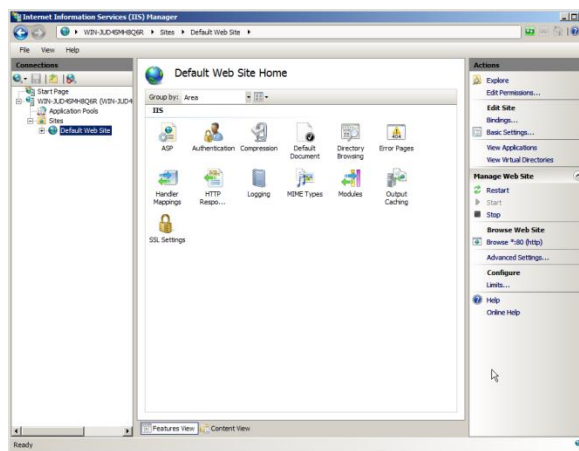
6. Create the IR system ODBC connection for IR (ir\_system3), as well as the other ODBC connections required for your mappings. As in previous versions of Windows, if you are not the administrator user the ODBC connections created will not save.
7. IIS configuration is now required. To do this, first the IIS Manager, which is located under Control Panel\Administrative Tools:



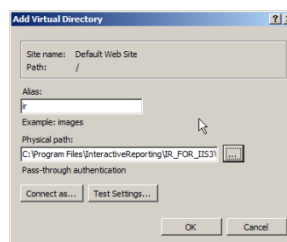
You will then be presented with the following screen:



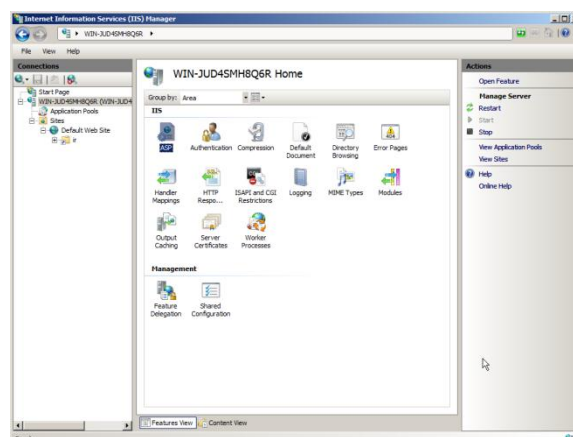
1. Double-click on the Server (Under Connections pane) , then Web Sites:

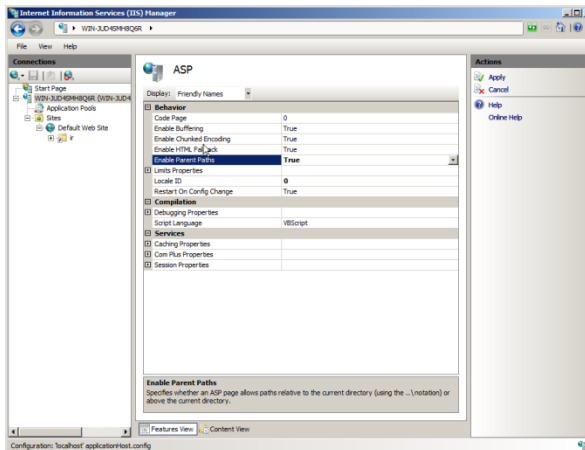
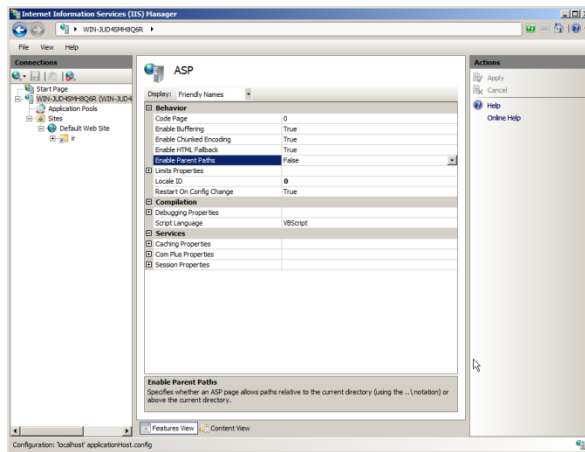


2. Right-click on 'Default Web Site' and select 'Add Virtual Directory' from the drop down list:
3. Enter in the Alias (Virtual directory name) and the physical path to the ir\_source, then click on 'OK':



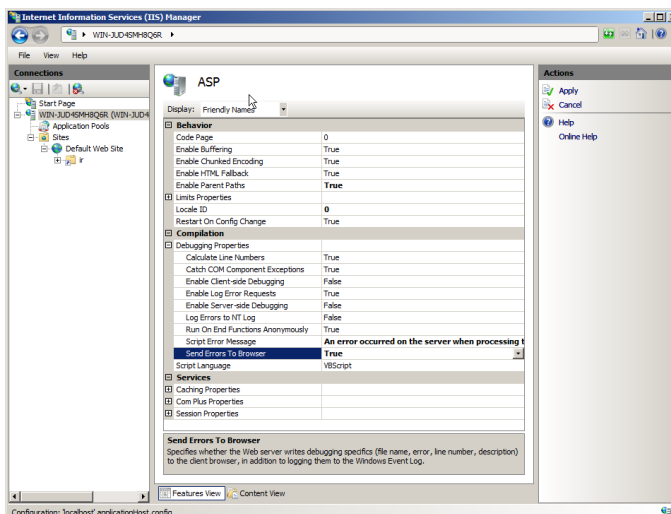
4. We need to enable parent paths for IIS. To do this, double-click on the ASP icon for IIS server, then in the Behaviour pane, double-click on the 'Enable Parent Paths' property, and change from 'False' to 'True', then click on 'Apply' in Actions pane on the right-hand side of the window:





After applying the parent paths it is advisable to run the iisreset command.

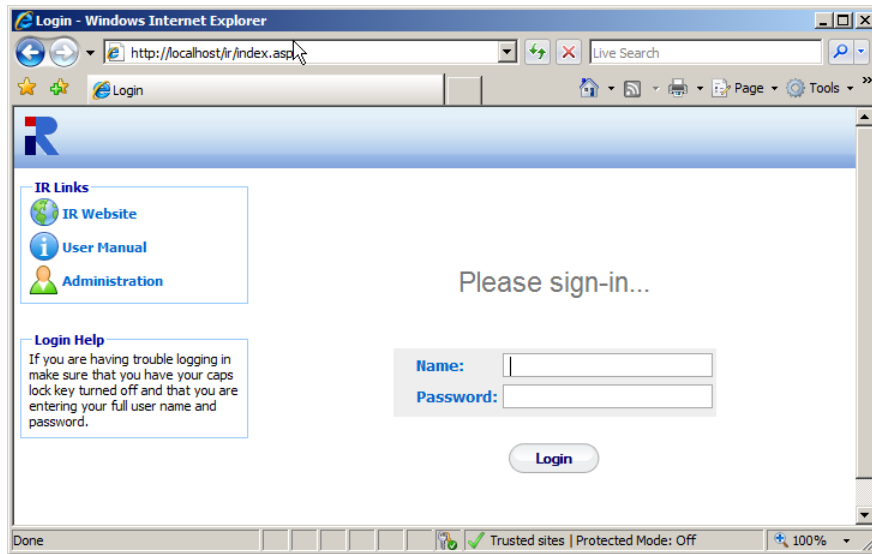
5. Interactive Reporting also recommend that error messages are reported to browser. To enable this feature, follow the steps below:
  1. Double-click on the ASP icon for the server, and then in the Compilation pane, expand the Debugging Properties. Within this section, there is the option to Send Errors to Browser. Change this from False to True (if it is already set to False), then apply change:



I also recommend writing the errors out to the NT log, as depending on which browser you are using the errors may not be displayed.

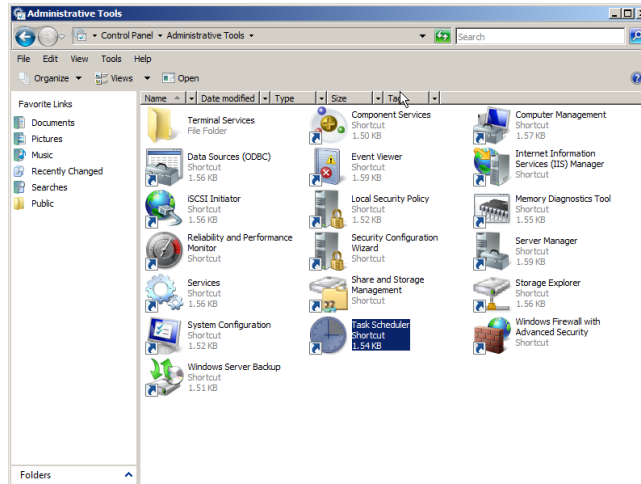
2. Execute the iisreset command to ensure that all the user settings modified above are set before attempting to run IR.

8. Attempt to connect to IR using your browser. If you have configured IR correctly, you should be presented with the login screen:

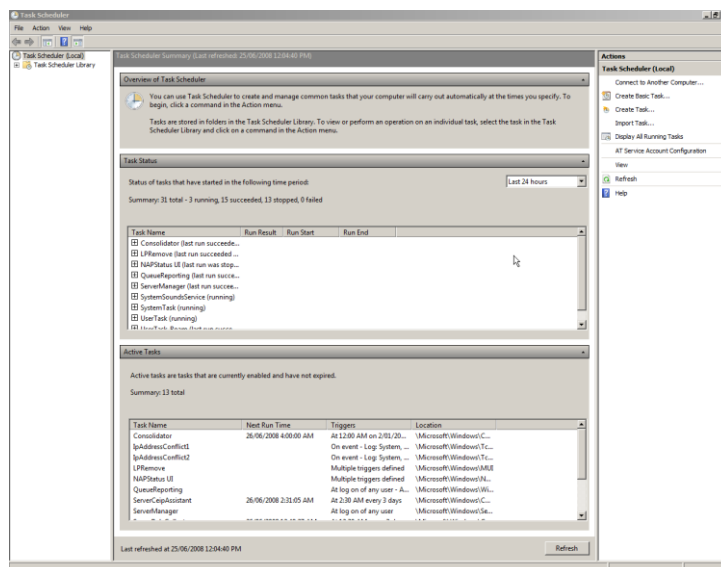


# How to Create a Scheduled Task in Windows Server 2008

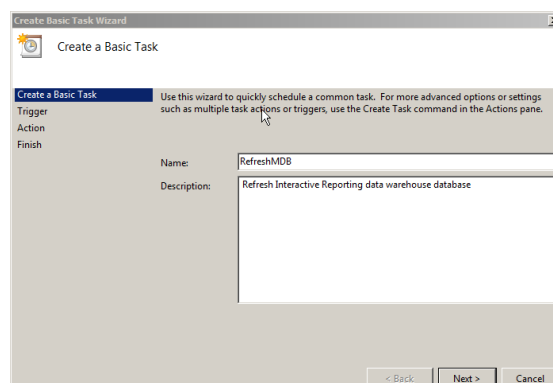
Scheduled tasks are now created via the Task Scheduler program in Windows Server 2008. This is located within the Administrative Tools folder in Control Panel:



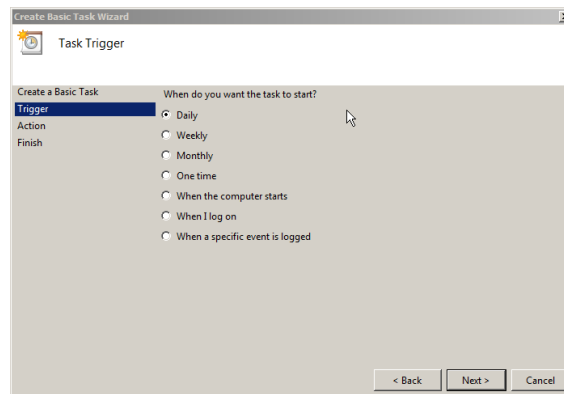
When the task scheduler is opened, you are displayed the following screen:



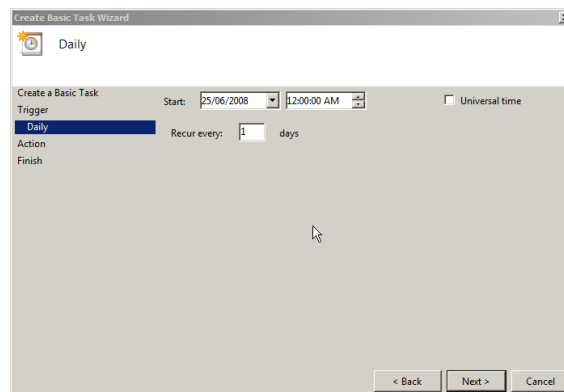
For the RefreshMDB script, we need to create a 'Basic Task'. From the Actions panel to the right of the screen, click on 'Create Basic Task'. Enter in the name of the scheduled task, and a description of the task (optional):



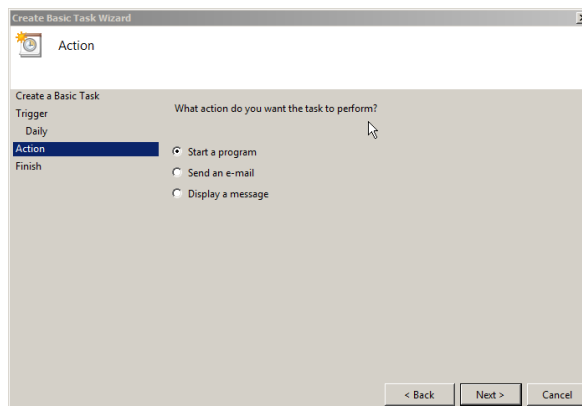
Select the scheduled task frequency:



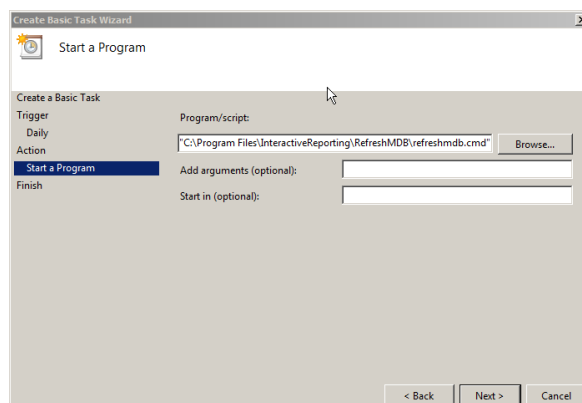
Select the time in which the scheduled task will execute at:



Select what you wish to occur when the scheduled task executes:



Select the path for the RefreshMDB.cmd script from the "C:\Program Files\InteractiveReporting\RefreshMDB" directory (or the location where Interactive Reporting is installed):



Click on 'Finish' to save the scheduled task:

The screenshot shows the 'Create Basic Task Wizard' dialog box, specifically the 'Summary' step. The window title is 'Create Basic Task Wizard'. The main area is titled 'Summary' and contains a list of steps on the left: 'Trigger', 'Daily', 'Action', 'Start a Program', and 'Finish'. The 'Finish' step is currently selected and highlighted in blue. The right side of the dialog displays the task details: Name: RefreshMDB, Description: Refresh Interactive Reporting data warehouse database, Trigger: Daily; At 12:00 AM every day, and Action: Start a program; 'C:\Program Files\InteractiveReporting\RefreshMDB\vel'. There is an unchecked checkbox labeled 'Open the Properties dialog for this task when I click Finish'. At the bottom, there is a note: 'When you click Finish, the new task will be created and added to your Windows schedule.' and three buttons: '< Back', 'Finish', and 'Cancel'.

| Step            | Name       | Description   | Trigger                      | Action  |
|-----------------|------------|---|------------------------------|---|
| Trigger         |            |   |                              |   |
| Daily           |            |   |                              |   |
| Action          |            |   |                              |   |
| Start a Program |            |   |                              |   |
| <b>Finish</b>   | RefreshMDB | Refresh Interactive Reporting data warehouse database | Daily; At 12:00 AM every day | Start a program; 'C:\Program Files\InteractiveReporting\RefreshMDB\vel' |

Open the Properties dialog for this task when I click Finish

When you click Finish, the new task will be created and added to your Windows schedule.

< Back Finish Cancel

