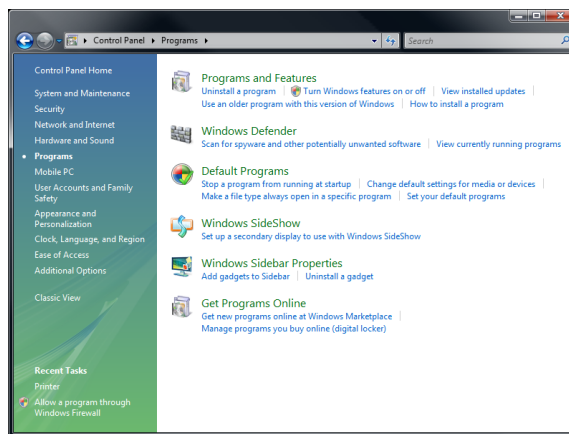


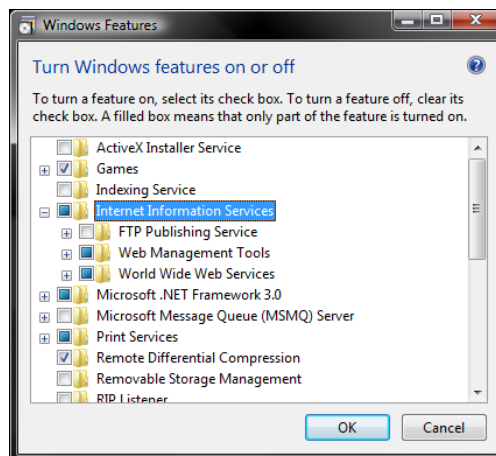
Installation of IR under Windows Vista

Installation of IR under windows vista involves the following steps:

- Installation of IIS
 - Installation of IR runtime
 - Configuration of Temp Directory
 - Configuration of ODBC connections
 - Configuration of IIS
1. Installation of IIS under windows vista is under the Programs and Features\Turn Windows features on or off in the control panel. You will require administration privileges for this.



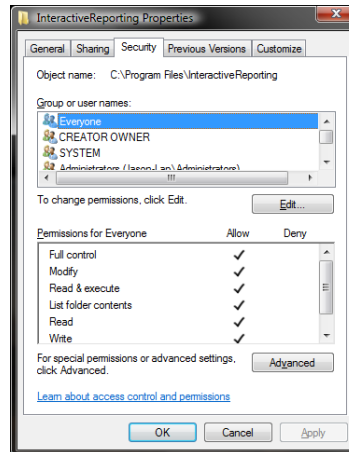
Once the Windows Features window is displayed, click on the 'Internet Information Services' checkbox. By default, not all options are selected:



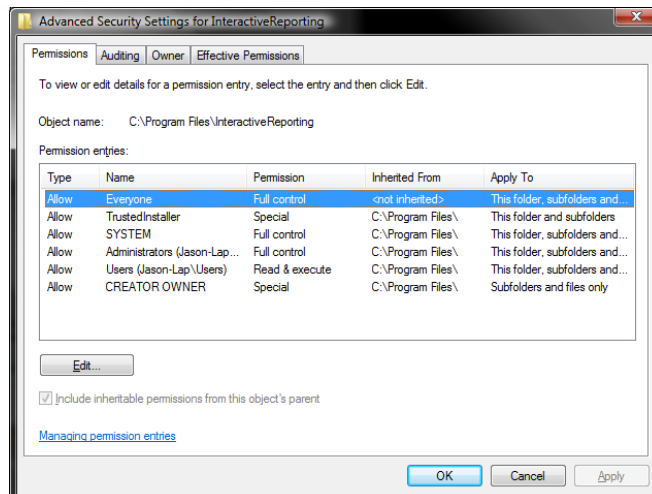
At the minimum, the following features MUST be installed:

- World Wide Web Services\Application Development Features\ASP
- World Wide Web Services\Application Development Features\ISAPI Extensions
- World Wide Web Services\Security\Basic Authentication
- World Wide Web Services\Security\Client Certificate Mapping Authentication
- World Wide Web Services\Security\Digest Authentication
- World Wide Web Services\Security\Windows Authentication

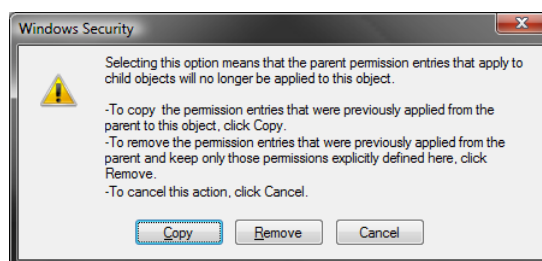
2. Extract the InteractiveReporting.zip file into the location where you wish to install IR (usually C:\Program Files). Depending on your installation zip file you may need to create the InteractiveReporting directory before unzipping installation file.
3. Installation of the IR runtime requires you to assign full control of the directory to 'Everyone':



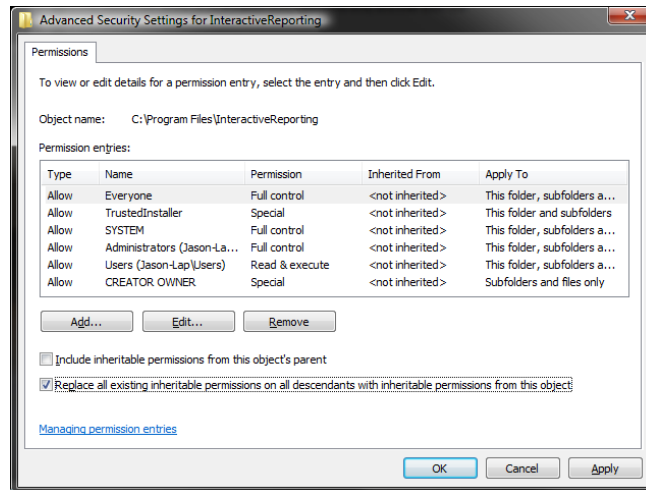
After assigning permissions to everyone, click on the advanced option in the dialog, and in the permissions window, click on 'edit':



Uncheck the 'Include inheritable permissions from this object's parent', and click on 'Copy' when the dialog is displayed:



Click on 'Replace all existing inheritable permissions on all descendants with inheritable permissions from this object':



4. We now need to install & register the DLL files which IR requires to function. To do this, you will need to run the command prompt as the administrator (it is not sufficient to run the command prompt while being the administrator user). Do run the command window as the Administrator, first locate the shortcut to run the Command Prompt (Usually All Programs\Accessories), and right-click on the Command Prompt icon, and select 'Run as Administrator'.

Change directory to the IR_FOR_IIS3 directory within the InteractiveReporting installation directory. Once you are in the directory, execute the setupdlls.bat file.

```
Administrator: Command Prompt
Microsoft Windows [Version 6.0.6000]
Copyright (c) 2006 Microsoft Corporation. All rights reserved.

C:\Windows\system32>cd C:\Program Files\InteractiveReporting\IR_FOR_IIS3
C:\Program Files\InteractiveReporting\IR_FOR_IIS3>setupdlls.bat
C:\Program Files\InteractiveReporting\IR_FOR_IIS3>iisreset

Attempting stop...
Internet services successfully stopped
Attempting start...
Internet services successfully restarted

C:\Program Files\InteractiveReporting\IR_FOR_IIS3>copy aspSmartUpload.dll C:\Windows\system32
1 file(s) copied.

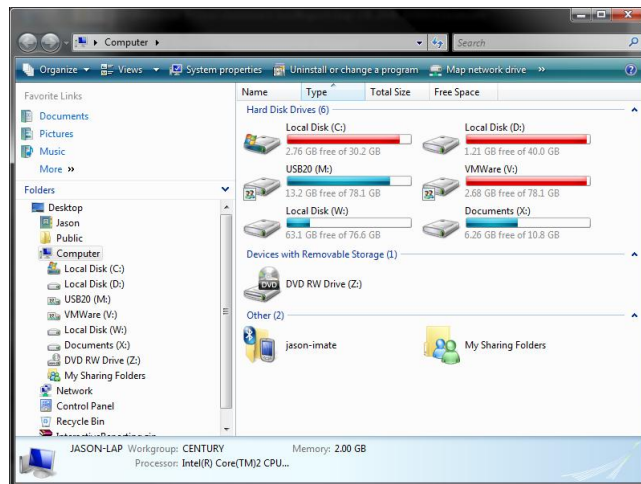
C:\Program Files\InteractiveReporting\IR_FOR_IIS3>copy aspSmartUploadutil.dll C:\Windows\system32
1 file(s) copied.

C:\Program Files\InteractiveReporting\IR_FOR_IIS3>regsvr32 /s C:\Windows\system32\aspSmartUpload.dll
C:\Program Files\InteractiveReporting\IR_FOR_IIS3>regsvr32 /s irengine3.dll
C:\Program Files\InteractiveReporting\IR_FOR_IIS3>regsvr32 /s simplechart4.dll

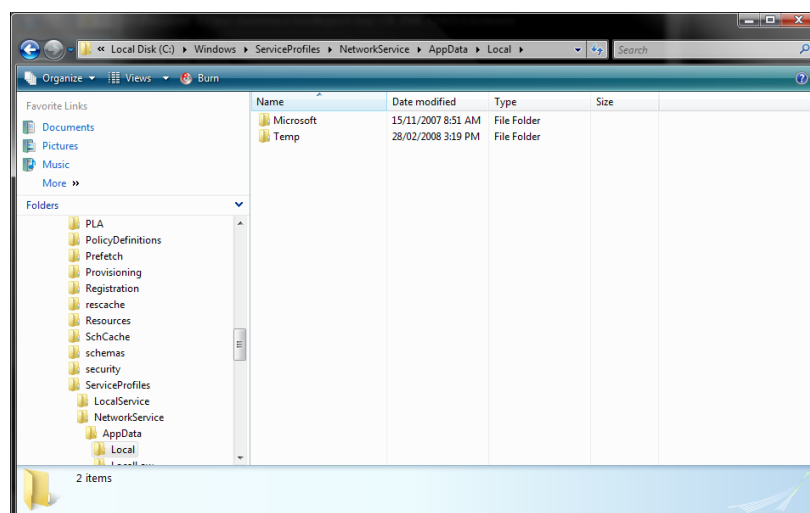
C:\Program Files\InteractiveReporting\IR_FOR_IIS3>regsvr32 /s gdiplus.dll
C:\Program Files\InteractiveReporting\IR_FOR_IIS3>regsvr32 /s ir_timer.dll
C:\Program Files\InteractiveReporting\IR_FOR_IIS3>
```

5. We now need to set the permissions on the NetworkService's temp directory to allow IR to write temp files during its processing of reports. Follow the instructions below to do this:

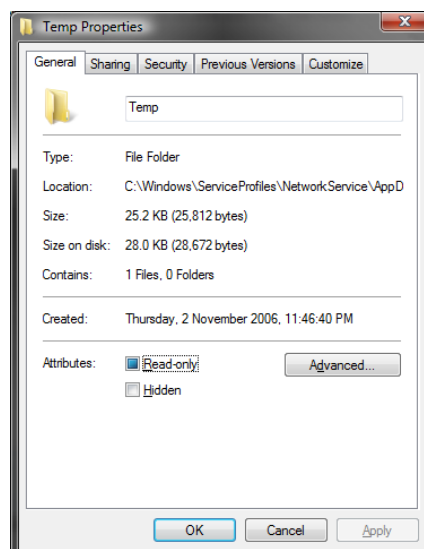
1. Start up windows explorer



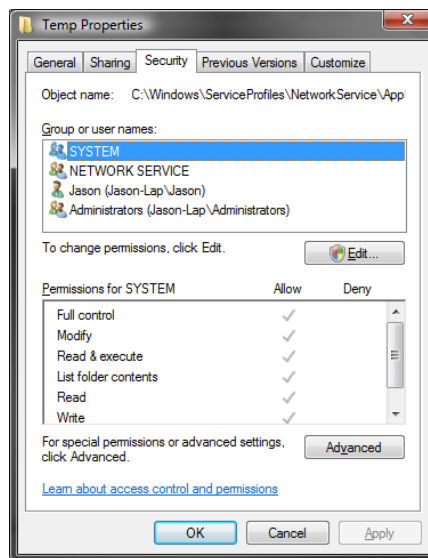
2. Click on the drive where windows is installed (C:\ in my installation)
3. Navigate to the ServiceProfiles\NetworkService directory within the Windows directory (Windows will ask you for permission to do this)
4. After you have been authenticated, navigate to directory AppData\Local (these are hidden by default, but you can enter the path from the directory path bar):



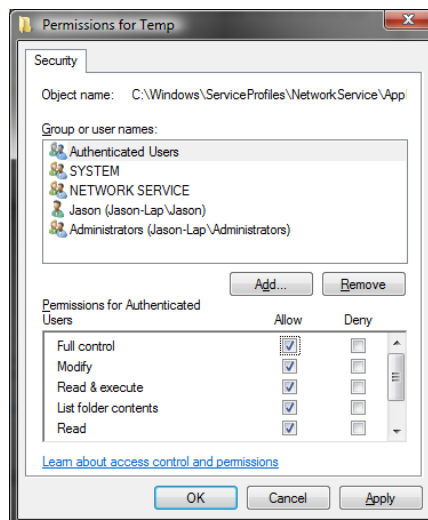
5. Right-click on the Temp directory, and select 'Properties':



6. Click on the Security tab

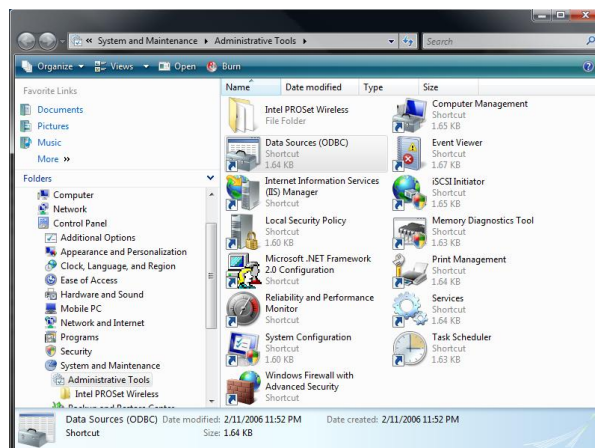


7. Click on 'Edit', then 'Add'. Add 'Authenticated Users' as a user, and give full control to the user. (Windows will give you a warning about security implications regarding this change)

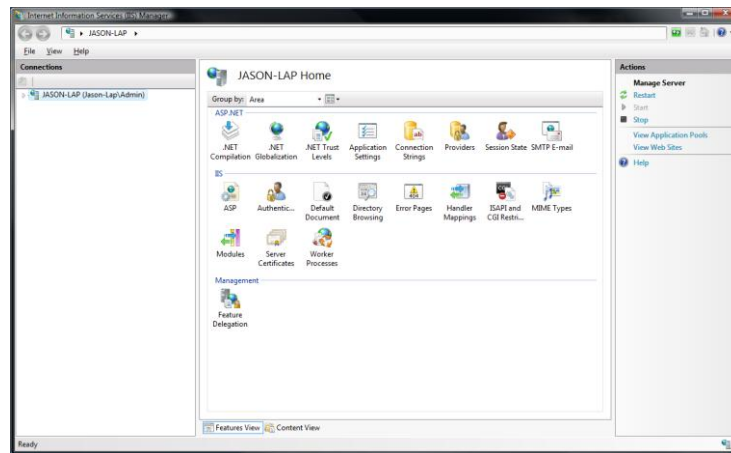


6. Create the IR system ODBC connection for IR (ir_system3), as well as the other ODBC connections required for your mappings. As in previous versions of Windows, if you are not the administrator user the ODBC connections created will not save.

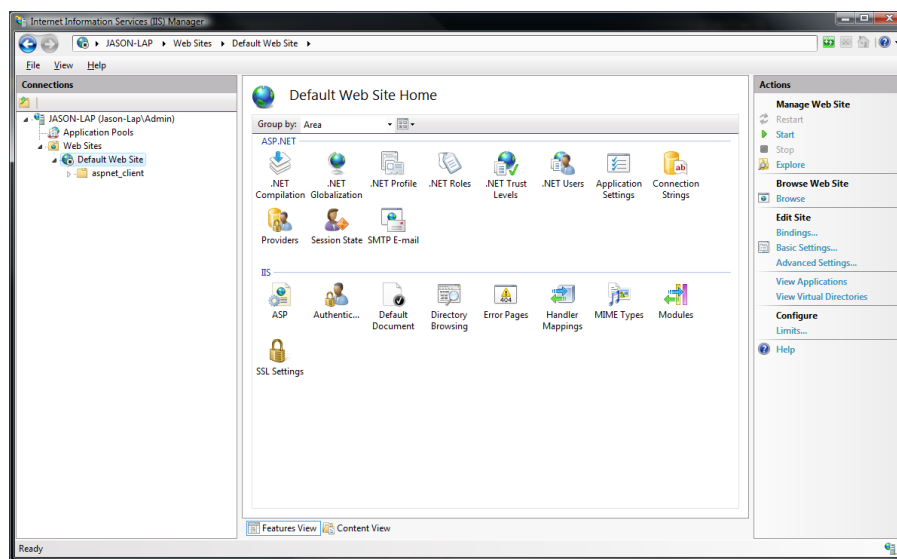
7. IIS configuration is now required. To do this, first the IIS Manager, which is located under System and Maintenance\Administrative Tools (You must have administrative privileges for this).



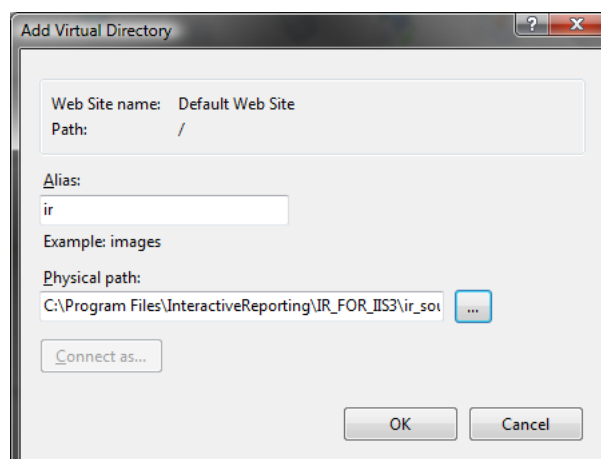
You will then be presented with the following screen:



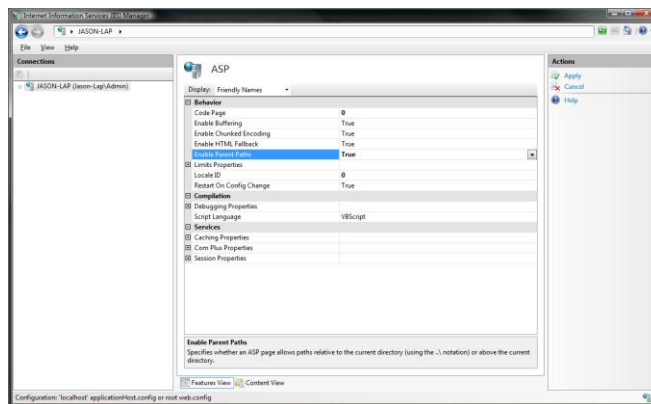
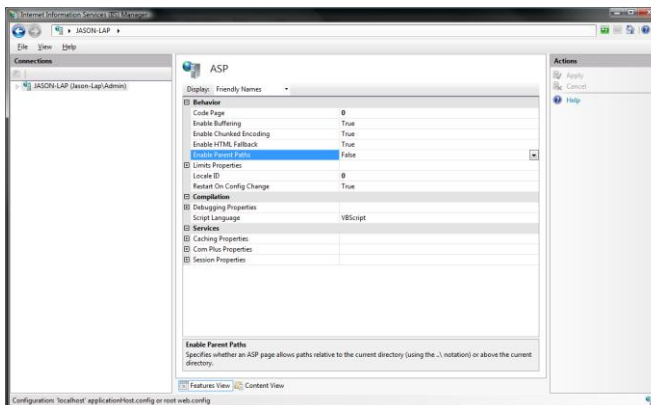
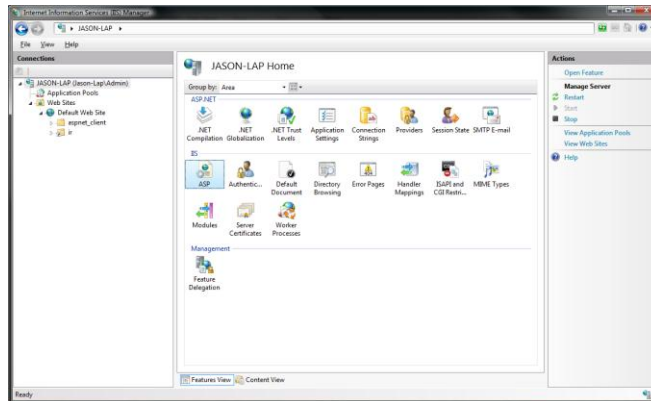
1. Double-click on the Server (Under Connections pane) , then Web Sites:



2. Right-click on 'Default Web Site' and select 'Add Virtual Directory' from the drop down list:
3. Enter in the Alias (Virtual directory name) and the physical path to the ir_source, then click on 'OK':

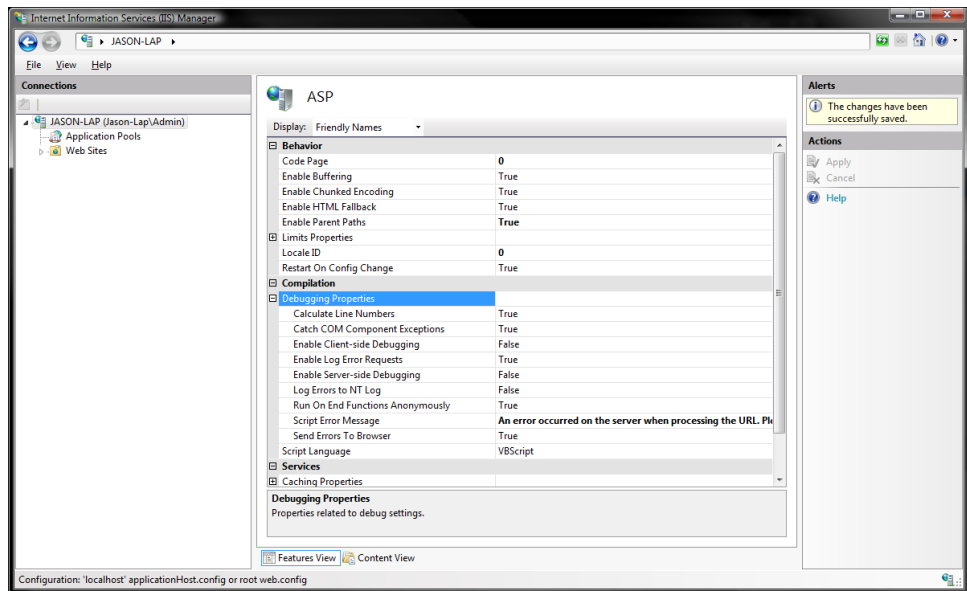


- We need to enable parent paths for IIS. To do this, double-click on the ASP icon for IIS server, then in the Behaviour pane, double-click on the 'Enable Parent Paths' property, and change from 'False' to 'True', then click on 'Apply' in Actions pane on the right-hand side of the window:



After applying the parent paths it is advisable to run the `iisreset` command (you need to run this in an Administrator-enabled command prompt).

- Interactive Reporting also recommend that error messages are reported to browser. To enable this feature, follow the steps below:
 - Double-click on the ASP icon for the server, and then in the Compilation pane, expand the Debugging Properties. Within this section, there is the option to Send Errors to Browser. Change this from False to True (if it is already set to False), then apply change:



I also recommend writing the errors out to the NT log, as depending on which browser you are using the errors may not be displayed.

6. Execute the iisreset command at the Administrator's command prompt to ensure that all the user settings modified above are set before attempting to run IR.
8. Attempt to connect to IR using your browser. If you have configured IR correctly, you should be presented with the login screen:

